

Message from the Directorate.....	2
Forum Agenda.....	3
Speakers.....	4
Arrival: NH Amsterdam Schiphol Hotel.....	6
Shuttle Schedule, Apps and WiFi.....	7
13.9 Amsterdam Tour and Things to Do.....	8
Safety	8

NH Schiphol Airport Hotel
Kruisweg 495, 2132 NA
Hoofddorp, The Netherlands
+ 31 (0)20 655 0550



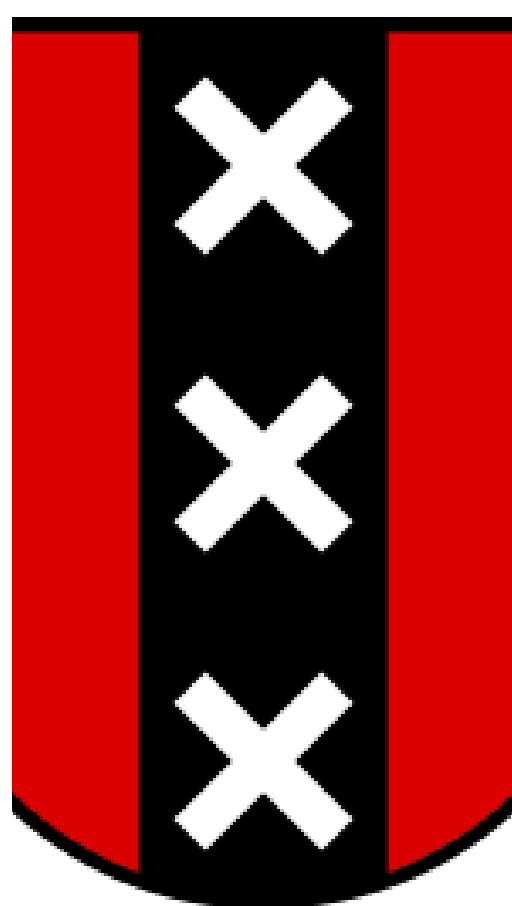
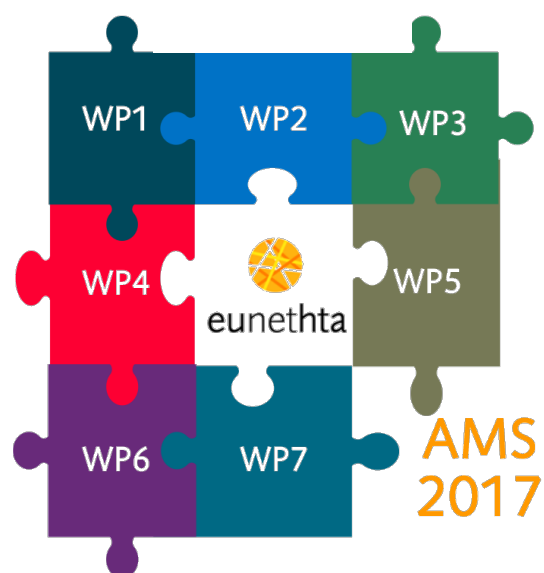
#euhta2017, #EUnetHTA



EUnetHTA JA3



EUnetHTA JA3



eunetha

ASSEMBLY AND FORUM

13-14.9.2017

AMSTERDAM, THE NETHERLANDS
BUILDING. PROGRESS. ADVANCEMENT.



eunethta
EUROPEAN NETWORK FOR HEALTH TECHNOLOGY ASSESSMENT

A Sincere Welcome to the 2017 EUnetHTA JA3 Assembly and Forum

It has been a dynamic year for EUnetHTA.

In an organisation that spans 29 countries and 81 organisations and institutions, accomplishments may seem to get lost: parallel consultation between EUnetHTA and the European Medicines Agency, now a single gateway, successful and productive discussions with heads of agencies/high-Level representatives and heads of European pharmaceutical companies, and the launch of the new Intranet with 300+ registered users.

As we move forward and expand on our catalogue of Joint Assessments, encourage national uptake and complete our deliverables, our focus is and should be to provide value and results for all stakeholders. Each and every one of you is an integral part of that process.

We know that all our partners have considerable demands on their time, and we thank you for your participation and work. As we welcome you to Amsterdam to discuss the status of our work and developments in the field of HTA, and to increase the speed and efficiency of our collaboration, we understand that dedicated people are at the core of EUnetHTA.

Marcus Guardian

COO

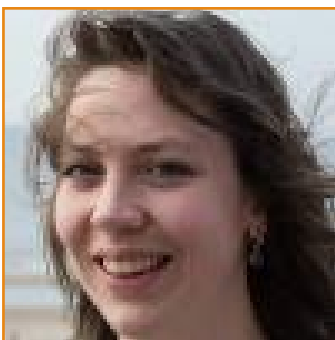
EUnetHTA JA3

Message
from
the Directorate

Forum Agenda Thursday 14 September 2017 (8h30-17h30)

START	END	PROGRAM ITEM	PRESENTERS
8.30	9.00	Coffee and registration	
9.00	9.10	Welcome and opening remarks	Wim Goettsch (Director EUnetHTAJA3) Tiana van Grinsven (Member of the Board ZIN)
9:10 - 10:45 Session 1: EUnetHTA JA3 progress Introduction by co-chairs: Chantal Belorgey (HAS), Ansgar Hebborn (EFPIA)		Advances in HTAB cooperation on Early Dialogues: Creation of the EDWP	François Meyer (HAS)
		One process for parallel regulator-HTA Early dialogues/Scientific advice	Hannah Brühl (GBA) Jane Moseley (EMA)
		Questions	All presenters
		Progress update on Joint Assessments	Ingvil Saterdal (NIPHNO) Anne Willemsen (ZIN) Julia Mayer-Ferbas (LBI-HTA)
		Questions	All presenters
		Summary results from WP7 research and implications for HTA cooperation	Nick Crabb (NICE)
10.45	11.15	Coffee break	
11:15-13:00 Session 2: Stakeholder involvement to date in EUnetHTA JA3 Introduction by co-chairs: Daniel Widmer (UEMO), Michelle Mujoomdar (EUnetHTA Directorate)		Experiences to date with stakeholder involvement in ED and JAs and JA3 suggestions	Representatives from Patients & Consumers (TBC) Elisabeth de Vries (representing Healthcare Providers)
		Panel on further development of stakeholder involvement	Representatives from the European Commission (Flora Giorgio) and from the four pillars of the HTAN Stakeholder Pool: Daniel Widmer (HCP), Valentina Stramiello (P&C), Menno Aarnout (Payers), Santiago Moreno (Industry) and Cees Smit (Patient) Panel moderator: Michelle Mujoomdar (EUnetHTA Directorate)
13.00	14.00	Lunch	
14.00	14.30	Update from the European Commission	Flora Giorgio (DG SANTE)
14:30-15:30 Session 3: Horizon scanning, topic selection and prioritisation Introduction by co-chairs: Alric Rüther (IQWiG), Yves Verboven (MedTech Europe)		Current state in JA3	Ingvil Saeterdal (NIPHNO)
		Role of horizon scanning	Irina Cleemput (KCE)
		Panel on role of stakeholders in horizon scanning, topic selection, and prioritisation	Antonio Grasso (PGEU), Artem Boltynkov (COCIR), Gottfried Endel (HVB), Representative from EFPIA (TBC), François Houyez (Eurodis) Chair: Alric Rüther (IQWiG) and Yves Verboven (MedTech Europe)
15.30	16.00	Coffee Break	
16:00-17:25 Session 4: Additional data collection through different sources Introduction by co-chairs: Michael Ermisch, (GKV-Spitzenverband), Wim Goettsch (Director EUnetHTA JA3)		Current progress in EUnetHTA JA3	François Meyer (HAS)
		Regulator's expectations of registries	Jane Moseley (EMA)
		Role of IMI, especially of projects on big data and focus on interaction with stakeholders	Nathalie Seigneuret (IMI)
		Example from practice, gathering data on the use of new oncology drugs in practice	Denis Lacombe (EORTC)
		Panel on the collection and use of additional data from clinical practice for HTA	All presenters and co-chairs
17:25	17.30	Closing remarks	Wim Goettsch (Director EUnetHTA JA3)

Speakers



Anne Willemssen

WP4 Assistant Project Manager

Zorginstituut (ZIN)

Progress update on Joint Assessments

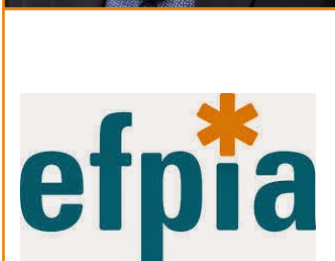


Alric Rüther

Head of International Affairs

Institute for Quality and Efficiency in Health Care (IQWiG)

Chair, Horizon scanning. topic selection and prioritisation



Ansgar Hebborn

Head - Global Market Access Policy

European Federation of Pharmaceutical Industries and Associations (EFPIA)

Chair, EUnetHTA JA3 progress

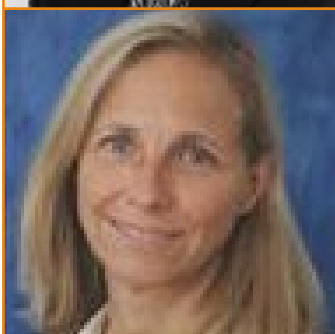


Antonio Grasso

Economic and Information Analyst

Pharmaceutical Group of the European Union (PGEU)

Panel on role of stakeholders in horizon scanning, selection and prioritisation



Chantal Belorgey

Director of Medical, Economic and Public Health Evaluation

Haute Autorité Santé (HAS)

Chair, EUnetHTA JA3 progress



Nathalie Seigneuret

Senior Scientific Project Manager

Innovative Medicines Initiative (IMI)

Role of IMI, especially of projects on big data and focus on interaction with stakeholders



Daniel Widmer

Vice-President

European Union of General Practitioners (UEMO)

Chair and Representative

Stakeholder involvement to date in EUnetHTA JA3



Denis Lacombe

Director

European Organisation for Research and Treatment of Cancer (EORTC)

Example from practice, gathering data on the use of new oncology drugs in practice



Flora Giorgio

Policy Officer

European Commission (EC)

Update from European Commission; panel on further development of stakeholder involvement



Tiana van Grinsven

Member of the Board

Zorginstituut (ZIN)

Welcome and opening remarks



Wim Goettsch

Director

EUnetHTA JA3 Directorate (ZIN)

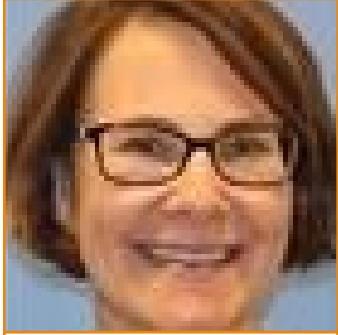
Welcome and closing remarks



François Meyer
Advisor to the President, International Affairs
 Haute Autorité Santé (HAS)
*Advances in HTAB cooperation on Early Dialogues:
 Creation of the EDWP; current progress in EUnetHTA JA3*



Hannah Brühl
Scientific Officer
 Federal Joint Committee (GBA)
*One process for parallel regulator-HTA Early dialogues/Scientific
 advice*



Ingvil Saterdal
Section Leader, Medicines and Health Economics
 Norwegian Institute for Public Health (NIPNO)
Progress update on Joint Assessments; current state in JA3



Irina Cleemput
Senior Health Economist
 Belgian Health Care Knowledge Centre
 (KCE)
Role of horizon scanning



Jane Moseley
Senior Scientific Officer
 European Medical Agency (EMA)
*One process for parallel regulator -HTA Early
 Dialogues/ Scientific advice; Regulator's expectations of
 registries*



Julia Mayer-Ferbas
Project Manager
 Ludwig Boltzmann Institute for HTA (LBI - HTA)
Progress update on Joint Assessments



Michelle Mujoomdar
Senior Scientific Officer
 EUnetHTA JA3 Directorate (ZIN)
Chair, Stakeholder development to date in EUnetHTA JA3



Michael Ermisch
Phamaceuticals Department
 GKV - Spitzenverband
Chair, Additional data collection through different sources



Nick Crabb
Programme Director, Scientific Affairs
 National Institute for Health and Care Excellence (NICE)
*Summary results from WP7 research and implications for HTA
 cooperation*



Speakers

- Valentina Stramiello (Patients and Consumers)**
- Menno Aarnhout (Payers)**
- Santiago Moreno (Industry)**
- Cees Smit (Patients and Consumers)**
- Artem Boltyenkov (COCIR)**
- Gottfried Endel (HVB)**
- François Houyez (Eurodis)**
- Yves Verboven (MedTech Europe)**

Practical Information

GETTING TO NH AMSTERDAM SCHIPHOL AIRPORT HOTEL

NH Hotel shuttle:
Available 24/7. Free for guests.

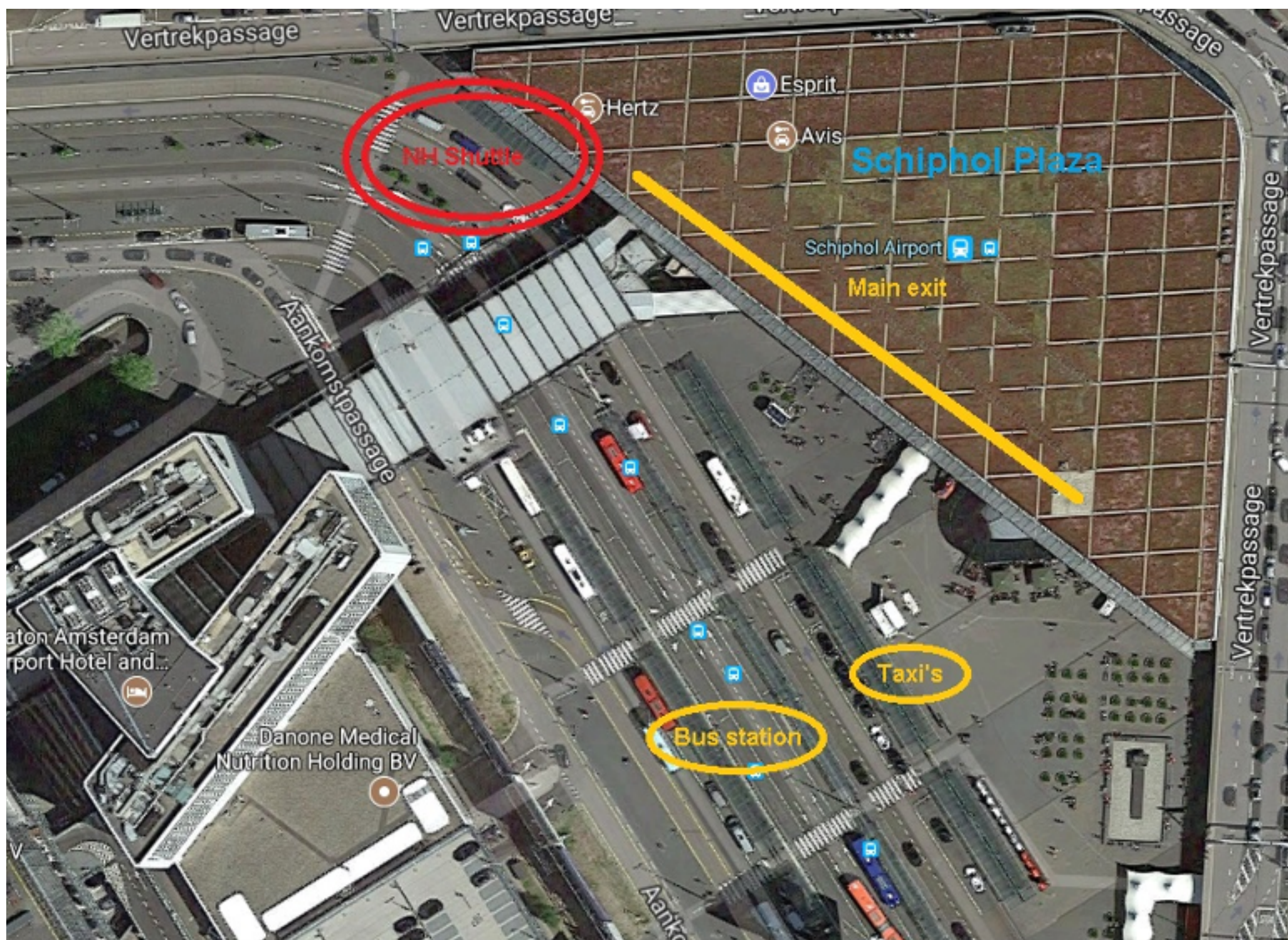
By public bus from Schiphol Airport: Buses 300 & 310 depart every 5 minutes. You can also take buses 361, 365 and 370. Stop: DE HOEK (see map, next page) is 400m from the hotel. Around €1.43 each way.

By taxi: It's a 10 minute trip and is around €25.

From Amsterdam Central Station: You can take the train to Schiphol Airport and then take a free shuttle. €5.20 (one-way only; RT must be used same day).

By car:
The hotel's GPS Coordinates: 52.2896184°N 4.7251284°E
Free on-site parking: exchange your entrance ticket for a free ticket at reception or main meeting room.

WHERE TO GET THE NH HOTEL SHUTTLE AT SCHIPHOL AIRPORT



When you arrive at Schiphol Airport and you walk through the arrival hall and outside the main entrance/exit (Schiphol Plaza) you will see the bus station in front of you. Walk to the right where the road bends slightly off and in that corner you can find the shuttles of the several hotels (Bus stop A9-A13). The shuttle of the NH Schiphol Airport is dark blue and has big white letters with NH Schiphol Airport. Please find above the picture with description and please find below the schedule of the NH shuttle service



DAY SHUTTLE

NH Hotel shuttle: Available 24/7. Free for guests.

HOTEL >> AIRPORT				AIRPORT >> HOTEL			
WEEKDAYS		WEEKENDS & HOLIDAYS (except 1 st of January)		WEEKDAYS		WEEKENDS & HOLIDAYS (except 1 st of January)	
8:00	15:15	8:00	15:00	8:15	15:30	8:15	15:15
8:15	16:45	8:30	15:30	8:30	16:00	8:45	15:45
8:30	16:15	7:00	16:00	8:45	16:30	7:15	16:15
8:45	16:45	7:30	16:30	7:00	17:00	7:45	16:45
7:00	17:15	8:00	17:00	7:15	17:30	8:15	17:15
7:15	17:30	8:30	17:30	7:30	17:45	8:45	17:45
7:30	17:45	9:00	18:00	7:45	18:00	9:15	18:15
7:45	18:00	8:30	18:30	8:00	18:15	9:45	18:45
8:00	18:15	10:00	19:00	8:15	18:30	10:15	19:15
8:15	18:30	10:30	19:30	8:30	18:45	10:45	19:45
8:30	18:45	11:00	20:00	8:45	19:00	11:15	20:15
8:45	19:00	11:30	20:30	9:00	19:15	11:45	20:45
9:00	19:15	12:00	21:00	9:15	19:30	12:15	21:15
9:15	19:30	12:30	21:30	9:30	19:45	12:45	21:45
9:30	19:45	13:00	22:00	9:45	20:00	13:15	22:15
9:45	20:00	13:30	22:30	10:00	20:15	13:45	22:45
10:15	20:15	14:00	23:00	10:30	20:30	14:15	23:15
10:45	20:30	14:30	23:30	11:00	20:45	14:45	23:45
11:15	20:45			11:30	21:00		
11:45	21:00			12:00	21:15		
12:15	21:15			12:30	21:30		
12:45	21:30			13:00	21:45		
13:15	21:45			13:30	22:00		
13:45	22:15			14:00	22:30		
14:15	22:45			14:30	23:00		
14:45	23:15			15:00	23:30		

NIGHT SHUTTLE

HOTEL >> AIRPORT	AIRPORT >> HOTEL
00:00	00:15
01:00	01:15
02:00	02:15
03:00	03:15
04:00	04:15
05:00	05:15

TAKING THE PUBLIC BUS FROM THE AIRPORT?



CONTACTS - EUNETHA +31 (0)6 22282858

Hotel, set-up, transport, registration
Ali Hussain, Assistant Project Manager
+31 (0)6 1250 2681 mhussain@zinl.nl
Press, presentations, video, Intranet
Charles Kinney, Communications Officer
+31 (0)6 1371 9561 ckinney@zinl.nl

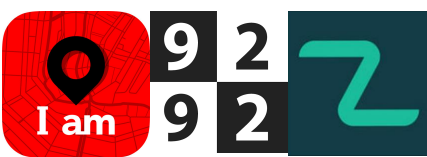
ACCESSIBILITY

NH Amsterdam Schiphol Airport Hotel is fully accessible for all guests. Please contact prior to or upon arrival either a staff member of the hotel or the Directorate if you require additional information or assistance.

APPS

<https://www.iamsterdam.com/en/plan-your-trip/practical-info/amsterdam-apps>

I AMSTERDAM: Maps and guides.
9292: Amsterdam insider real-time bus, tram, metro & train trip planner.
Tranzer: Buy train tickets on-line (but not for bus, tram or metro tickets).

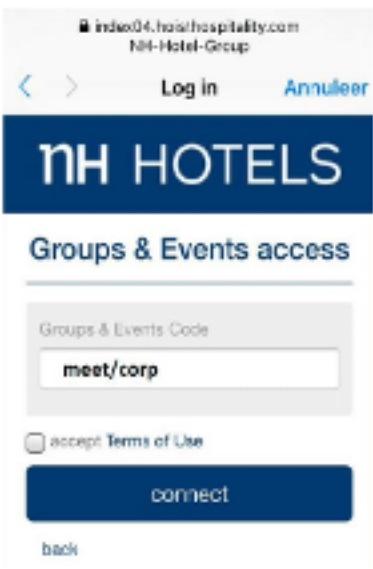


WIFI

WiFi access

Go to **Settings** → **Wi-Fi**
To access the Wi-Fi choose: **NH-Hotel Group**
Select **Groups & Events WIFI**
Enter the Groups & Events Code: **meet/corp**
Accept the **Terms of Use** by ticking the box
Click **Connect**

Now you are connected with our new, faster Wi-Fi!



THINGS TO DO

If you are an Assembly participant on Wednesday, 13.9, a complimentary evening shuttle will take you to Amsterdam center and return, (but of course, you are free to make your own way back to the hotel).

Departure from NH Schiphol:

20:00

Return to NH Schiphol: (sharp)

23:00

Amsterdam! There is nearly no end to Amsterdam's legendary Red Light District and nightlife but if you have time:

CANAL BOATS (20.8KM)

Easy to find one-hour tours run even at night.

DAM SQUARE (19.6KM)

Amsterdam's golden age City Hall and center.

ANNE FRANK HOUSE (18.7KM)

The well-known hiding place of Anne Frank is an Amsterdam icon.

REMBRANDT SQUARE (19.8KM)

Famous painter Rembrandt van Rijn had a house nearby. Figures from Dutch history now fill the square, along with many pubs and eateries.

HOW CLOSE IS

Shopping Hoofddorp (3KM)

Schiphol Airport (4KM)

Zorginstituut (18KM)

Centraal (Central Station) (20.7KM)

AMSTERDAM METRO



Important: The Amsterdam Metro does NOT go to Schiphol Airport. A 20-minute train to/from Centraal Station or Station Zuid will get you to and from the airport.

SAFETY (112 FOR EMERGENCIES/0900 8844 NON-EMERGENCIES)

